



redimo

Machining Technology

redimo

## Welcome to REDIMO

As acknowledged professionals in the maintenance, repair and modernisation as well as in the sales of new and rebuilt machinery, we offer expert consulting, many years of experience and, most importantly, a solution-based approach. Together with you, we decide whether your machine needs to be rebuilt and/or if it requires additional modernisation. For us, the whole process begins when we collect the machine from your factory. From then on, everything – from the initial design and the various processing stages, to final delivery – is handled by us. Our technicians keep you continually informed about the current status of the project, and discuss the further procedures needed with you.

We are there for you – worldwide and around the clock!



---



redimo

## **Our new machining production**

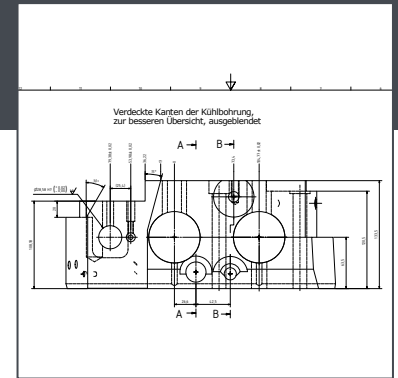
Due to the increased requirements regarding quality, reaction speed and not least flexibility, we have decided to expand our internal machining production further.

Therefore, we bought a new production hall with office rooms in 2019. Thus, besides of the expansion of the internal machining production, we are now not only able to satisfy the demands on the process planning, but also to accompany the manufacturing parts during all steps of the manufacturing process until the quality assurance.





Sample part



Production drawing

*What do we produce?*

We produce nearly all spare and wear parts for your machinery.

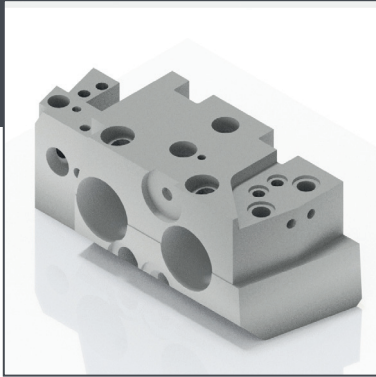


*What do we need?*

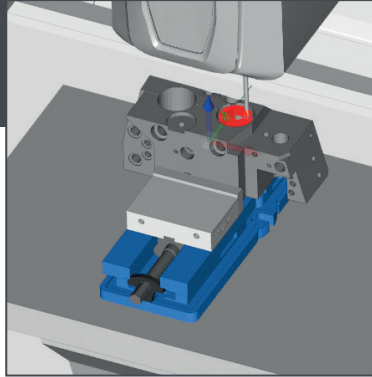
A drawing or a sample part.



redimo



Inventor Professional



ESPRIT CAM-Software



New part

### *How do we produce?*

Based on the drawing delivered by you we generate the corresponding machining programmes. You can also provide a sample part and we will prepare the drawing for you.

We are working with Inventor Professional for the production of models as well as drawings. For producing more complicated parts on our 5-axis-milling machine, we also have - besides of the manual programming - the possibility to create the milling programme by means of the Esprit software using the 3-D-model.





## Mikron UMS 900

Clamping surface 600 x 1,200 mm

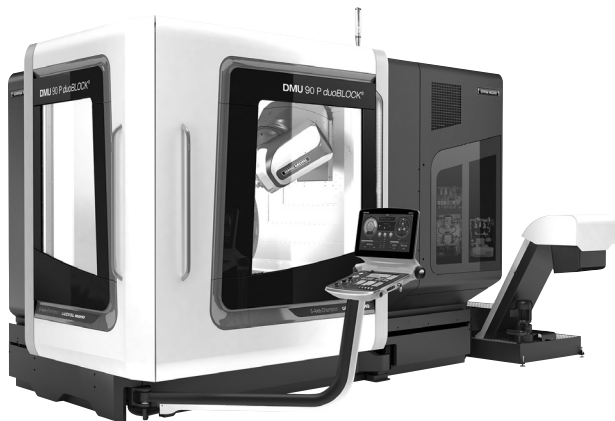
Loading max. 500 kg

### Operating travel

x-Axis 900 mm

y-Axis 630 mm

z-Axis 500 mm



## DMU 90 P duoBlock

Clamping surface  $\varnothing$  900 x 700 mm (NC round table)

Loading max. 1,800 kg

### Operating travel

x-Axis 900 mm (longitudinal)

y-Axis 1,050 mm

z-Axis 850 mm





## DMG MORI CMX 1100 V

Clamping surface 1,400 x 560 mm

Loading max. 1,000 kg

### Operating travel

x-Axis 1,100 mm

y-Axis 560 mm

z-Axis 510 mm

### NC Dividing head

Centre height 150 mm

Diameter workpiece 240 mm

Weight workpiece 200 kg

Weight workpiece with tailstock 400 kg



### Weiler C 50 / C3

Distance between centres	2,000 mm
Swing over bed	570 mm
Swing over cross slide	340 mm
Distance cross slide	340 mm



**Tool presetter UNO 20/40 premium 40**

Edge finder

Repeatability +/- 0.002 mm

SK50 Ultra-precise spindle with a concentricity of 0.002 mm



## Extended workbench

We have a huge network of suppliers with whom we have been working for many years for all those manufacturing steps we cannot carry out on our own.

We are happy to assist you in maintaining the productivity of your machinery, in manufacturing spare and wear parts in case of machine breakdown as well as in repairing and rebuilding your machines.

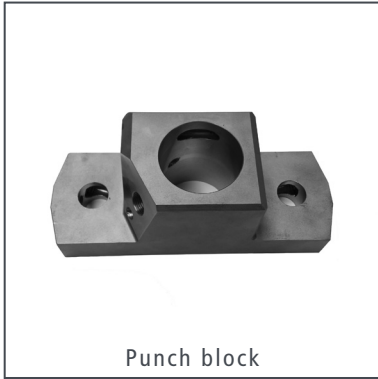
We stand out for quality, reliability and reaction speed.

Together with Redimo Forging Technology we are able to assist you in all requirements around your machinery.

Challenge us!

Milling parts

---



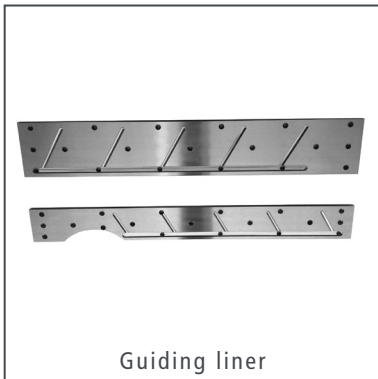
Punch block



Transfer lever



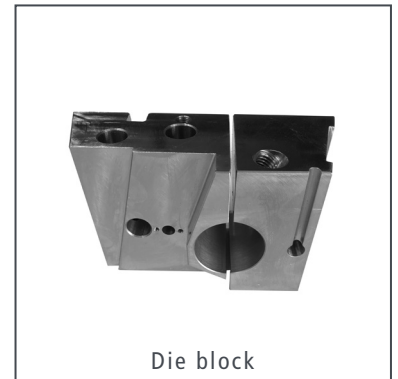
Punch block



Guiding liner



Lever



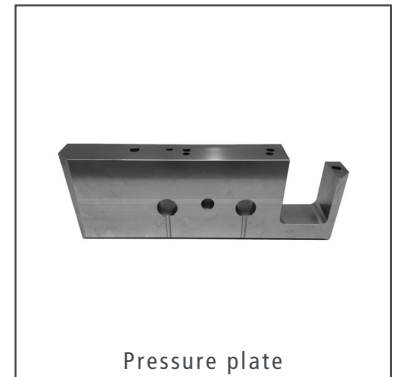
Die block



Die block



Slide plate



Pressure plate

---

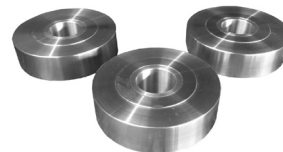
Turning part



Coupling



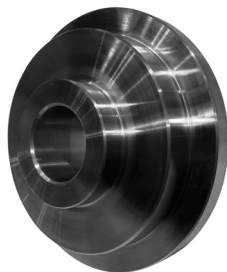
Cutting beam



Cam roller



Cam carrier



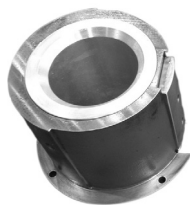
Feed roll carrier



Brake ring



Excenter ring



Crankshaft bushing



Piston, Bolt



Redimo GmbH

Hanns-Martin-Schleyer-Straße 25-27

47877 Willich

**Telephone** +49 2154 4903-0

**Fax** +49 2154 4903-10

**E-Mail** [info@redimo.com](mailto:info@redimo.com)

**Internet** [www.redimo.com](http://www.redimo.com)

